

ELECTRIC MOBILITY

S

CPX

S
SUPER
SOCO

Approved by 

SS #44



 SUPER
SOCO

INDEX OF THE CONTENT

CPx	6
CPx PRO	14
CUmini	22
CUx	34
CUx Ducati	42
TCmax	44
TC Wanderer	56
TS Street Hunter	68
TSx	80
TC	90
Technical data.....	100

Happiness is a journey

happiness IS A journey



CPX



ELECTRIC **INSPIRING** THE MARKET



The best electric scooter in the market takes on a fresh new color look: bring out your city power

high performances


90 Km/h
L3 max speed


4 kW
L3 rated power

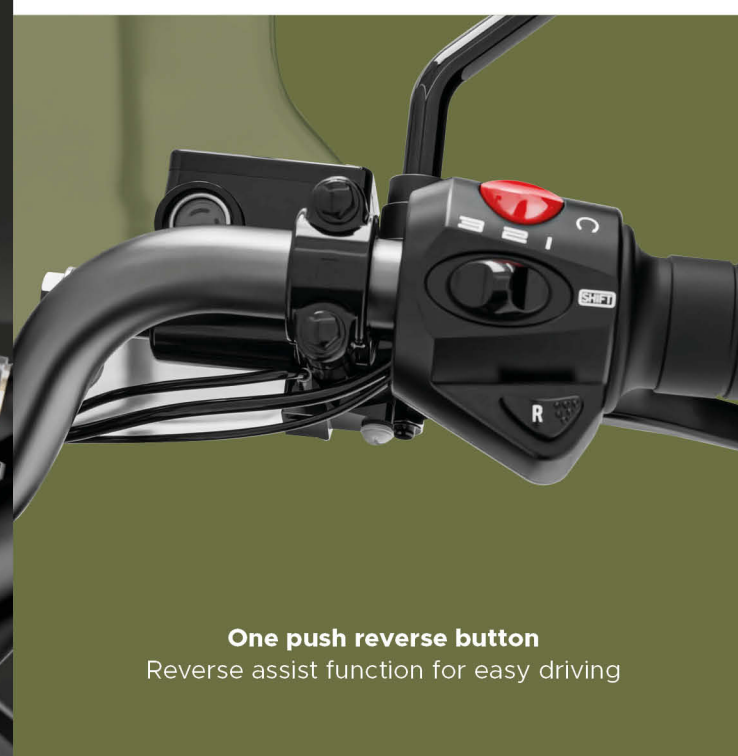

137 Km
L3 autonomy
2 batteries



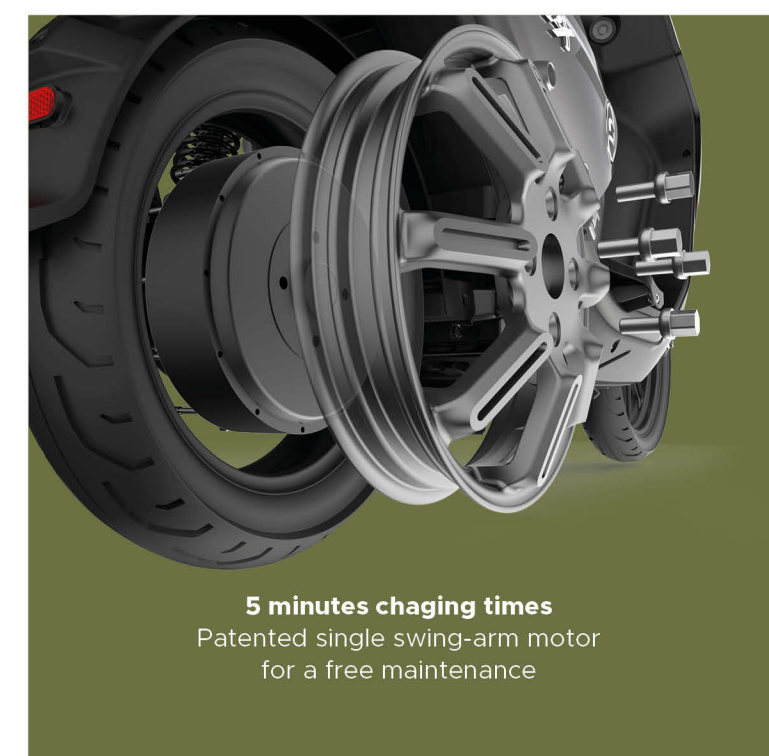
USB charging port
Charge your phone when the main power
is turned on



Storage space - 2.000 cm³
Take with you everything you need, handy



One push reverse button
Reverse assist function for easy driving



5 minutes charging times
Patented single swing-arm motor
for a free maintenance

CITY POWER



Details that stand out.
Contrast stitching emphasises the outlines of the extra strong comfort seat: maximum comfort and style, even on long journeys.

Full LED headlights provide the best visibility conditions, day, night and in all weather conditions.

75_m
Radiation distance

29000_{Cd}
High beam brightness

13480_{Cd}
Low beam brightness



get ready for

a long journey



60V45Ah
Battery capacity

3 years+
Battery life

1200+
Cycle

3.5h
Charging time
single battery



● Green ● Black ● Blue ○ White ● Red

TECHNICAL INFORMATION

Homologation	L1, L3 (comparable to a 50cc, 125cc.)		
Motor	SUPER SOCO	Weight	125 kg
Rated power	L1 3000 W L3 4000 W	L*W*H	2022 mm*757* mm*1450 mm
Maximum power	L1 3300 W L3 4800 W	Wheelbase	1366 mm
Battery model	Polymer lithium battery	Ground Clearance	154 mm
Battery capacity	60 V/45 Ah (Optional with 2 batteries)	Seat Height	925 mm
Charging time	3.5 h (single battery)	Rims	Fr. 2.15-16 Rr. 2.5-14
Output current	15 Ah	Tyres	Fr. 100/80-16 Rr. 110/80-14
Autonomy	L1 170 km* L3 137 km*	Suspension	Hydraulic damping system
Max speed	L1 45 km/h L3 90 km/h	Brakes	CBS
Climbing angle	≤ 14°	Colors	Green, Blue, Red, Black, White, Silver, Grey

*WMTC Stage 3

Tested at an average speed of 45 km/h; rider weight 75 kg.

Warning: The photos and technical information in this catalogue may refer to prototypes subject to modifications during production and are purely for illustration and reference purposes, and are therefore not binding on Vmoto International. Vmoto cannot be held responsible for any print and/or translation errors. This catalogue is transnational and therefore some products may not be available and/or their features may vary in accordance with local laws. Not all colours and versions are available in each country. Vmoto reserves the right to make changes and improvements to any product without obligation of prior notice or to make such changes to products already sold. Further characteristics of the products are contained in the pertinent owner's manuals. The products represented are not definitive versions and are therefore subject to significant changes at Vmoto's discretion without prior notice. The photographs published in this catalogue show only professional riders under controlled street conditions. Do not attempt to imitate such riding behaviour as it could be dangerous for you or other people on the road. This catalogue, including but not limited to the trademarks, logos, texts, images, graphics and table of contents herein, constitute Vmoto intellectual property, or in any event Vmoto has the right to reproduce it; any reproduction, modification or other whole or partial use of the catalogue or its contents, including publication on the Internet without the prior written consent of Vmoto, is prohibited. Actual battery consumption may vary based on many factors, including but not limited to riding style, maintenance performed, weather conditions, surface characteristics, tyre pressure, load, weight of the rider and the passenger, accessories. The weights in running order are considered with all operating fluids, standard equipment and battery. For more information visit www.Vmotosoco.com.

April 2023

CPX | PRO

ONE STEP HIGHER



ELECTRIC AT PRO LEVEL


105 Km/h
Max speed


7 kW
Rated power


100 Km
Autonomy
2 batteries



USB charging port
Charge your phone when the main power
is turned on



Storage space - 2.000 cm³
Take with you everything you need, handy



One push reverse button
Reverse assist function for easy driving



5 minutes charging times
Patented single swing-arm motor
for a free maintenance

Load capacity

at the top



The carbon steel rear luggage rack is safe and strong: it has passed 1 million vibration resistance tests.

Full LED headlights provide the best visibility conditions, day, night and in all weather conditions.

75_m
Radiation distance

29000_{Cd}
High beam brightness

13480_{Cd}
Low beam brightness





Quick and easy repair

Key electronic parts are housed under the front cover: in case of failure, you have easy access and take less time for maintenance.



● Green ● Black ● Blue ○ White ● Red

never stop

60^v90 Ah Battery capacity **3 years+** Battery life **1200+** Cycle **7 h** Charging time
2 batteries



The dual removable batteries work in parallel and provide up to 140 km of worry-free driving.

TECHNICAL INFORMATION

Homologation	L3 (comparable to a 125cc.)		
Motor	SUPER SOCO	Weight	143 kg
Rated power	7000 W	L*W*H	2022 mm*757* mm*1450 mm
Maximum power	8000 W	Wheelbase	1366 mm
Battery model	Polymer lithium battery	Ground Clearance	154 mm
Battery capacity	60 V/90 Ah (Optional with 2 batteries)	Seat Height	925 mm
Charging time	3.5 h (single battery)	Rims	Fr. 2.15-16 Rr. 2.5-14
Output current	15 Ah	Tyres	Fr. 100/80-16 Rr. 110/80-14
Autonomy	100 km*	Suspension	Hydraulic damping system
Max speed	105 km/h	Brakes	CBS
Climbing angle	≤ 20°	Colors	Green, Blue, Red, Black, White, Silver, Grey

*WMTC Stage 3
Tested at an average speed of 45 km/h; rider weight 75 kg.

Warning: The photos and technical information in this catalogue may refer to prototypes subject to modifications during production and are purely for illustration and reference purposes, and are therefore not binding on Vmoto International. Vmoto cannot be held responsible for any print and/or translation errors. This catalogue is transnational and therefore some products may not be available and/or their features may vary in accordance with local laws. Not all colours and versions are available in each country. Vmoto reserves the right to make changes and improvements to any product without obligation of prior notice or to make such changes to products already sold. Further characteristics of the products are contained in the pertinent owner's manuals. The products represented are not definitive versions and are therefore subject to significant changes at Vmoto's discretion without prior notice. The photographs published in this catalogue show only professional riders under controlled street conditions. Do not attempt to imitate such riding behaviour as it could be dangerous for you or other people on the road. This catalogue, including but not limited to the trademarks, logos, texts, images, graphics and table of contents herein, constitute Vmoto intellectual property, or in any event Vmoto has the right to reproduce it; any reproduction, modification or other whole or partial use of the catalogue or its contents, including publication on the Internet without the prior written consent of Vmoto, is prohibited. Actual battery consumption may vary based on many factors, including but not limited to riding style, maintenance performed, weather conditions, surface characteristics, tyre pressure, load, weight of the rider and the passenger, accessories. The weights in running order are considered with all operating fluids, standard equipment and battery. For more information visit www.Vmotosoco.com.



100% FUN



The 100% electric scooter is the right companion for getting around town



42 Km/h
Max speed

600 W
Rated power

39 Km
Autonomy

minimal weight,

great design

3 great colors.

which one

do you prefer?



orange



white

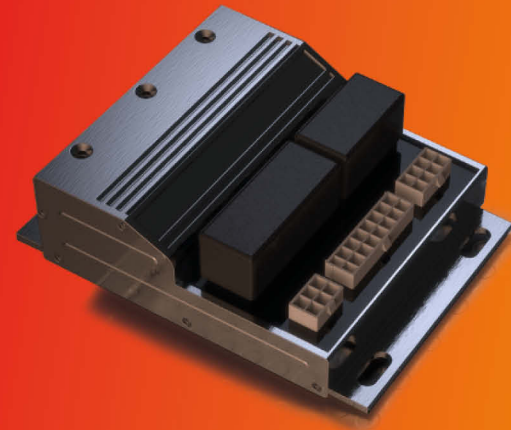


light blue



Dual start modes

Remote key or APP cloud control: switch on your ride!



Fast, steady and responsive

0.2 second Linear dynamic reaction with FOC3.3 controller.



Travel leisurely and worry free

One click for a fault self inspection, timely response to emergencies.



One click parking

Safe parking key, effectively avoid mis-operation, safe and worry free.



HIGH PERFORMANCE DRIVE

New generation of drive system improves in stability and immunity

more safe

Smart features for your safety

LED intelligent sensing light system.

High position atmosphere light,
automotive high intensity light
source, integrate indicators and
daytime running light.

8500 Cd
Brightness

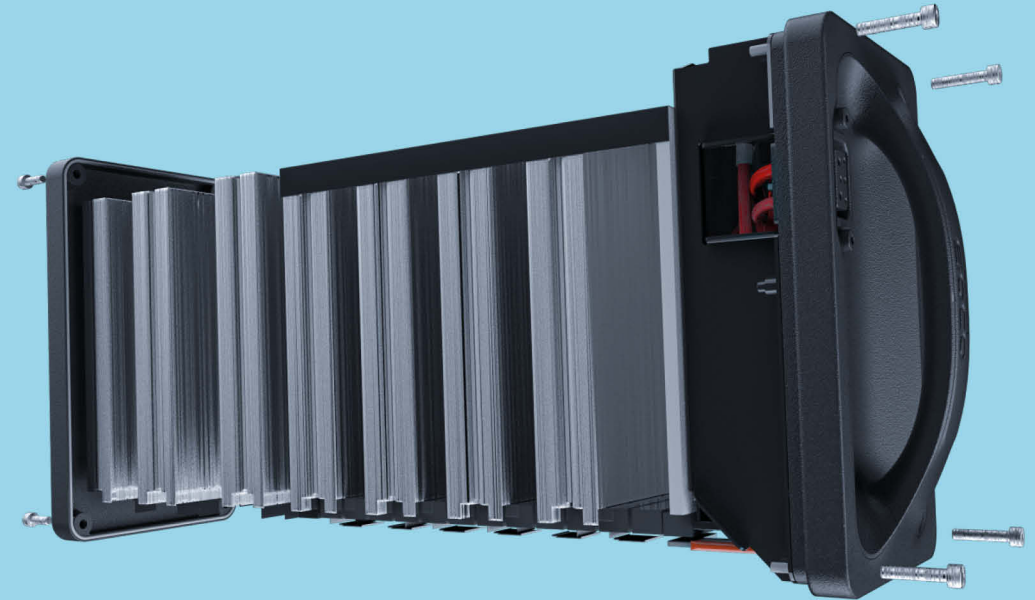
15 m
Radiation distance

Stronger passability, better handling, more stable grip.

No fear of bends with the
high-strength shock absorbing
79/90-12 wide tires, super strong
steering grip.



small, light and
powerfull



48V 20 Ah
Battery capacity

3-5 years+
Battery life

600+
Cycle

4.5 h
Charging time

The 48V 20 Ah battery pack with softcore NCM technology is controlled by the intelligent BMS 4.0 Battery Management System and allows CUMINI to travel up to 40 km on a single charge. The battery pack is easily removable and recharged through the normal home network.

Indispensable for

ride out with friends
 go to school
 go to the office
 have a pizza
 love the planet!



○ White

● Light blue

● Orange

TECHNICAL INFORMATION

Homologation	L1 (comparable to a 50cc.)			
Motor	SUPER SOCO		Weight	57 kg
Rated power	600 W	L*W*H	1655 mm*695 mm*1083 mm	
Maximum power	1000 W	Wheelbase	1169 mm	
Battery model	Polymer lithium battery		Ground Clearance	135 mm
Battery capacity	48 V/20 Ah	Seat Height	878 mm (R Point)	
Charging time	4.5 h	Rims	Fr. 1.6-12 Rr. 1.6-12	
Output current	5 Ah	Tyres	Fr. 70/90-12 Rr. 70/90-12	
Autonomy	39 km*	Suspension	Hydraulic damping system	
Max speed	42 km/h	Brakes	SBS	
Climbing angle	≤ 12°	Colors	Orange, White, Light Blue	

*WMTC Stage 3

Tested at an average speed of 45 km/h; rider weight 75 kg.

Warning: The photos and technical information in this catalogue may refer to prototypes subject to modifications during production and are purely for illustration and reference purposes, and are therefore not binding on Vmoto International. Vmoto cannot be held responsible for any print and/or translation errors. This catalogue is transnational and therefore some products may not be available and/or their features may vary in accordance with local laws. Not all colours and versions are available in each country. Vmoto reserves the right to make changes and improvements to any product without obligation of prior notice or to make such changes to products already sold. Further characteristics of the products are contained in the pertinent owner's manuals. The products represented are not definitive versions and are therefore subject to significant changes at Vmoto's discretion without prior notice. The photographs published in this catalogue show only professional riders under controlled street conditions. Do not attempt to imitate such riding behaviour as it could be dangerous for you or other people on the road. This catalogue, including but not limited to the trademarks, logos, texts, images, graphics and table of contents herein, constitute Vmoto intellectual property, or in any event Vmoto has the right to reproduce it; any reproduction, modification or other whole or partial use of the catalogue or its contents, including publication on the Internet without the prior written consent of Vmoto, is prohibited. Actual battery consumption may vary based on many factors, including but not limited to riding style, maintenance performed, weather conditions, surface characteristics, tyre pressure, load, weight of the rider and the passenger, accessories. The weights in running order are considered with all operating fluids, standard equipment and battery. For more information visit www.vmotosoco.com.

April 2023

SS

Jorge Lorenzo

Vmoto testimonial
5-time MotoGP
World Champion



CUmini

LIMITED EDITION JORGE LORENZO



CUmini Limited Edition Jorge Lorenzo borns to celebrate the 5-time MotoGP World Champion.
A unique racing-inspired edition in which the carbon-like texture lights up with red glow
and is complemented by the rider's graphics.

CUX

at work,
**with
style**



CUX is the 100% electric scooter designed to meet
your everyday needs

see it
clearly

VA (Vertical Alignment) multiple function display. Intelligent high brightness, self-adjust with light sensing. 150° wide angle visibility. Self inspection on initiation, safe riding.

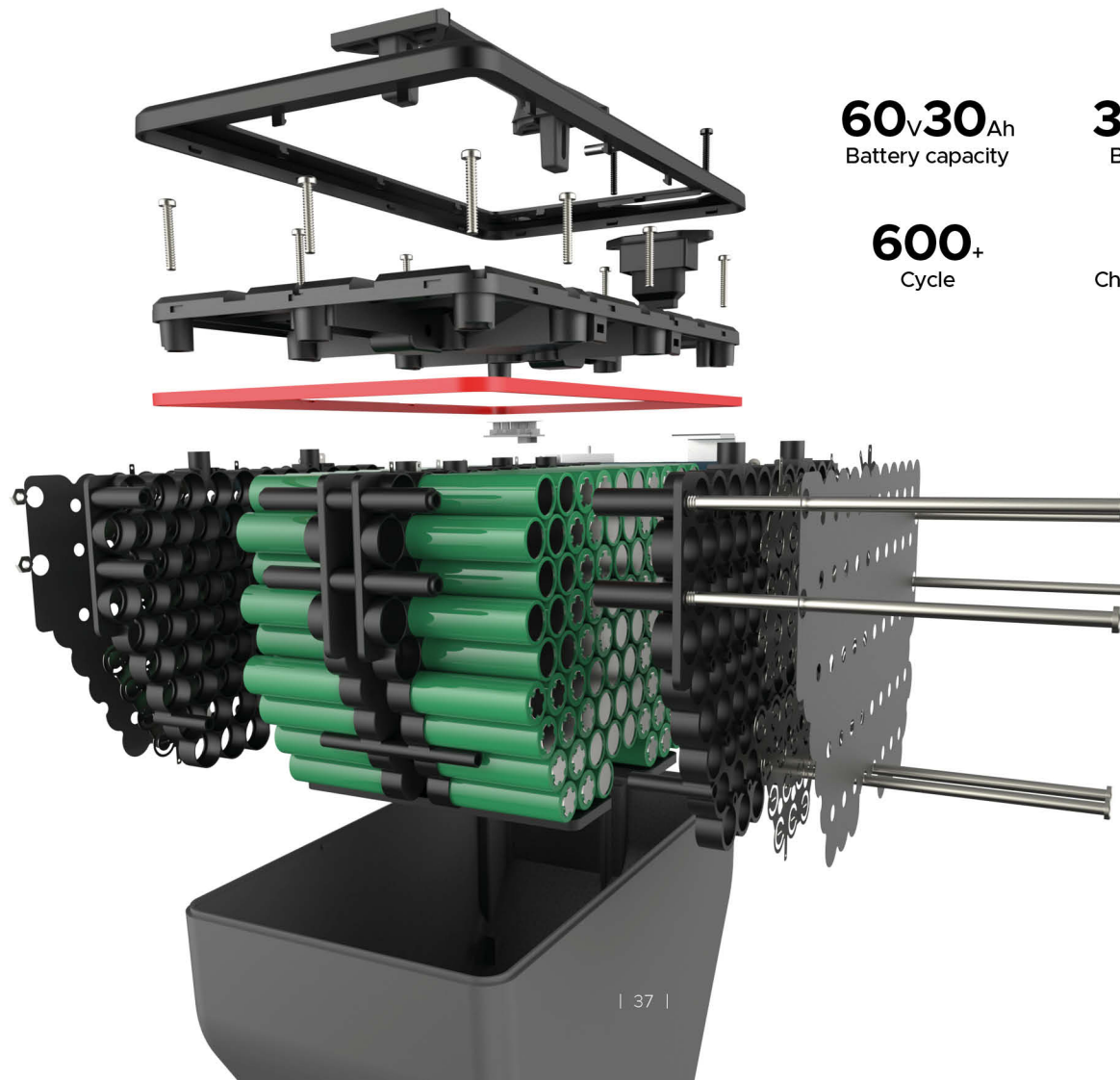


Digital contact switch
Multifunctional buttons for a higher stability.



Dual start modes
Remote key or APP cloud control: switch on your ride!

small, light and
powerfull



60V30Ah
Battery capacity

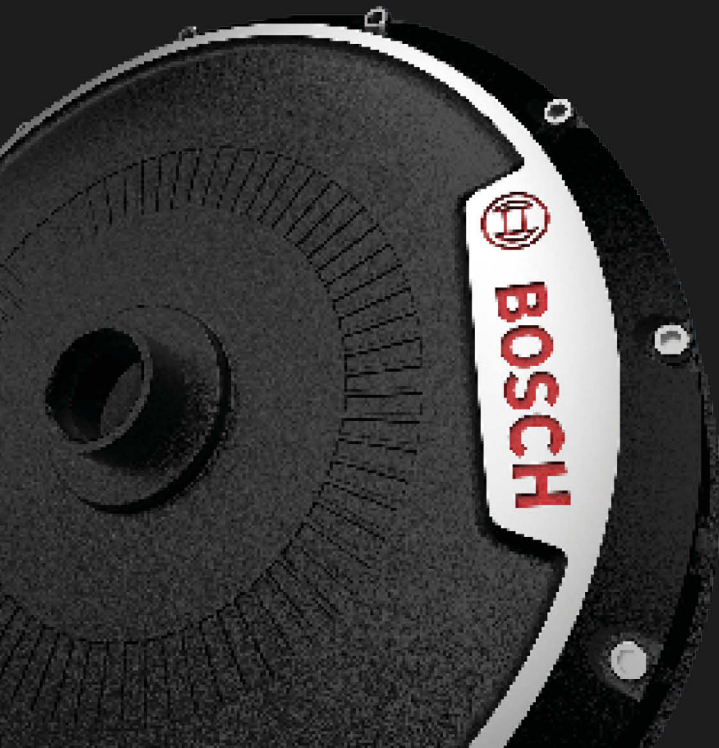
3-5 years+
Battery life

600+
Cycle

8h
Charging time


BOSCH engine

Customized developing for city transportation



 **45** Km/h
Max speed

 **1600** W
Rated power

 **65** Km
Autonomy

Look far away

Symmetrical U Design for an intelligent sensing head light, with integrated daylight and indicators, high and low beam included get perfect dustproof and waterproof performance: matrix LED beads, carve the shape of light, flash the charm of wisdom.



75 m
Radiation distance

2900 Cd
High beam brightness

1348 Cd
Low beam brightness

Fast, steady and responsive

Precise control and linear output of power with FOC3.0 controller.



Excellent safety and flexibility

Front/Rear disk brake + EBS assistant system: quick response, shorter braking distance.



Wings of flying

Incline high-brightness LED lights. Position lights, braking light and turning indicators all-in-one. A wing type tail-lights bold and iconic.





Cutting-edge technology and many, small details that make your ride easy, safe and enjoyable.



● Gold

● Cobalt blue

● Charcoal Grey

The perfect balance of size and
functionality

TECHNICAL INFORMATION

Homologation	L1 (comparable to a 50cc.)		
Motor	BOSCH	Weight	74 kg
Rated power	1600 W	L*W*H	1782 mm*727 mm*1087 mm
Maximum power	2000 W	Wheelbase	1217 mm
Battery model	18650 cylindrical battery	Ground Clearance	140 mm
Battery capacity	60 V/30 Ah	Seat Height	720 mm (R Point)
Charging time	8 h (single battery)	Rims	Fr. 2.15-12 Rr. 2.5-12
Output current	4 Ah	Tyres	Fr. 90/90-12 Rr. 90/90-12
Autonomy	65 km*	Suspension	Hydraulic damping system
Max speed	45 km/h	Brakes	SBS
Climbing angle	≤ 14°	Colors	Dark Cold, Cobalt Blue, Charcoal Gray

*WMTC Stage 3

Tested at an average speed of 45 km/h; rider weight 75 kg.

Warning: The photos and technical information in this catalogue may refer to prototypes subject to modifications during production and are purely for illustration and reference purposes, and are therefore not binding on Vmoto International. Vmoto cannot be held responsible for any print and/or translation errors. This catalogue is transnational and therefore some products may not be available and/or their features may vary in accordance with local laws. Not all colours and versions are available in each country. Vmoto reserves the right to make changes and improvements to any product without obligation of prior notice or to make such changes to products already sold. Further characteristics of the products are contained in the pertinent owner's manuals. The products represented are not definitive versions and are therefore subject to significant changes at Vmoto's discretion without prior notice. The photographs published in this catalogue show only professional riders under controlled street conditions. Do not attempt to imitate such riding behaviour as it could be dangerous for you or other people on the road. This catalogue, including but not limited to the trademarks, logos, texts, images, graphics and table of contents herein, constitute Vmoto intellectual property, or in any event Vmoto has the right to reproduce it; any reproduction, modification or other whole or partial use of the catalogue or its contents, including publication on the Internet without the prior written consent of Vmoto, is prohibited. Actual battery consumption may vary based on many factors, including but not limited to riding style, maintenance performed, weather conditions, surface characteristics, tyre pressure, load, weight of the rider and the passenger, accessories. The weights in running order are considered with all operating fluids, standard equipment and battery. For more information visit www.vmotosoco.com.

April 2023

CUx Special Edition DUCATI

SUPER
SOCO

Dario Marchetti
World Brand Ambassador
Super Soco



CUx
Special Edition Ducati



Official
Electric Scooter
Supplier



CUx Limited Edition Ducati borns from the collaboration with the historic and prestigious brand that made MotoGP history.

Shared values, common intentions: the paths of Ducati and Vmoto meet in this two-wheeler, a symbol of the collaboration of the two companies.

S SUPER
SOCO

TC
max

TC
max





WILD GRACE

The city is yours for a fun-filled ride.
The saddle, made of quilted faux leather, provides comfort even on longer trips,
and the combined braking system makes this two-wheeler safe and reliable.

more and more
beautiful



Your habits, your passions, your work, your motorbike.


95 Km/h
Max speed


3.9 kW
Rated power


92 Km
Autonomy



Europe's most popular electric vehicle continues to conquer with its design and performances.

CAFE RACER LINES, **100% ELECTRIC SOUL**



LCD INSTRUMENT PANEL

Ingenious combination of technology and retro styling, inspired by a classic mechanical display, typical of a café racer; more refined, simple and easy to read, thanks to white backlighting and defined characters.



DYNAMIC LED HEADLIGHT

Adapts to all road conditions, day and night. Provides high illumination, wide angle and maximum safety.



PRETTY EVEN TOGETHER

The comfortable seat and extra pedals provide comfort for the passenger as well.

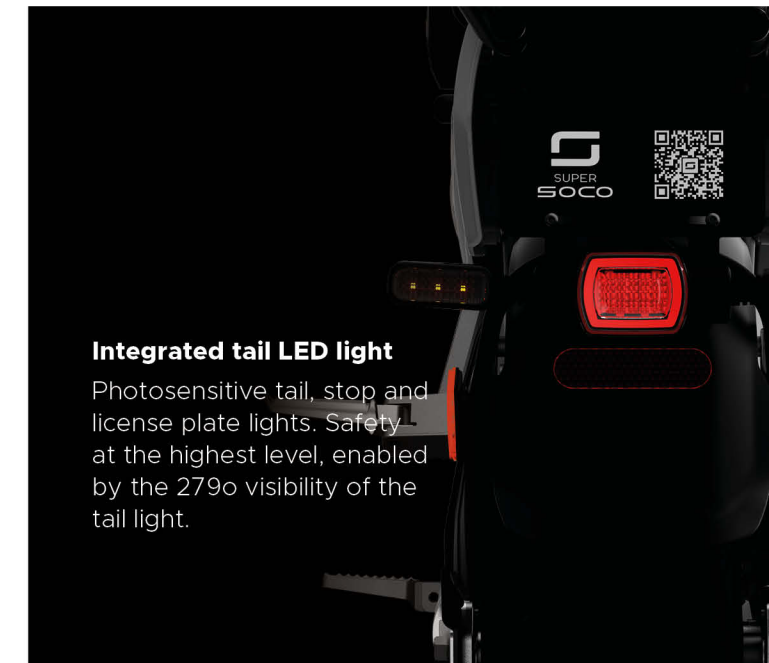
LED direction indicators

Circular cigar shape. Ultrasonic continuous welding technology meets EU standards. Waterproof and moisture-proof, ensures high light penetration.



Integrated tail LED light

Photosensitive tail, stop and license plate lights. Safety at the highest level, enabled by the 2790 visibility of the tail light.





HIGH POWER CENTRAL ENGINE

Embedded in the frame and connected to the rear wheel via the toothed drive belt, the mid-engine allows for optimal weight distribution between the front and rear axles, benefiting riding pleasure.

170Nm
Peak torque

14°
Climbing angle

5100W
Power peak

93%
Power conversion

FILL UP THE ROAD

Remove, transport and charge the battery wherever you want, or plug it in or connect it to a normal power source.

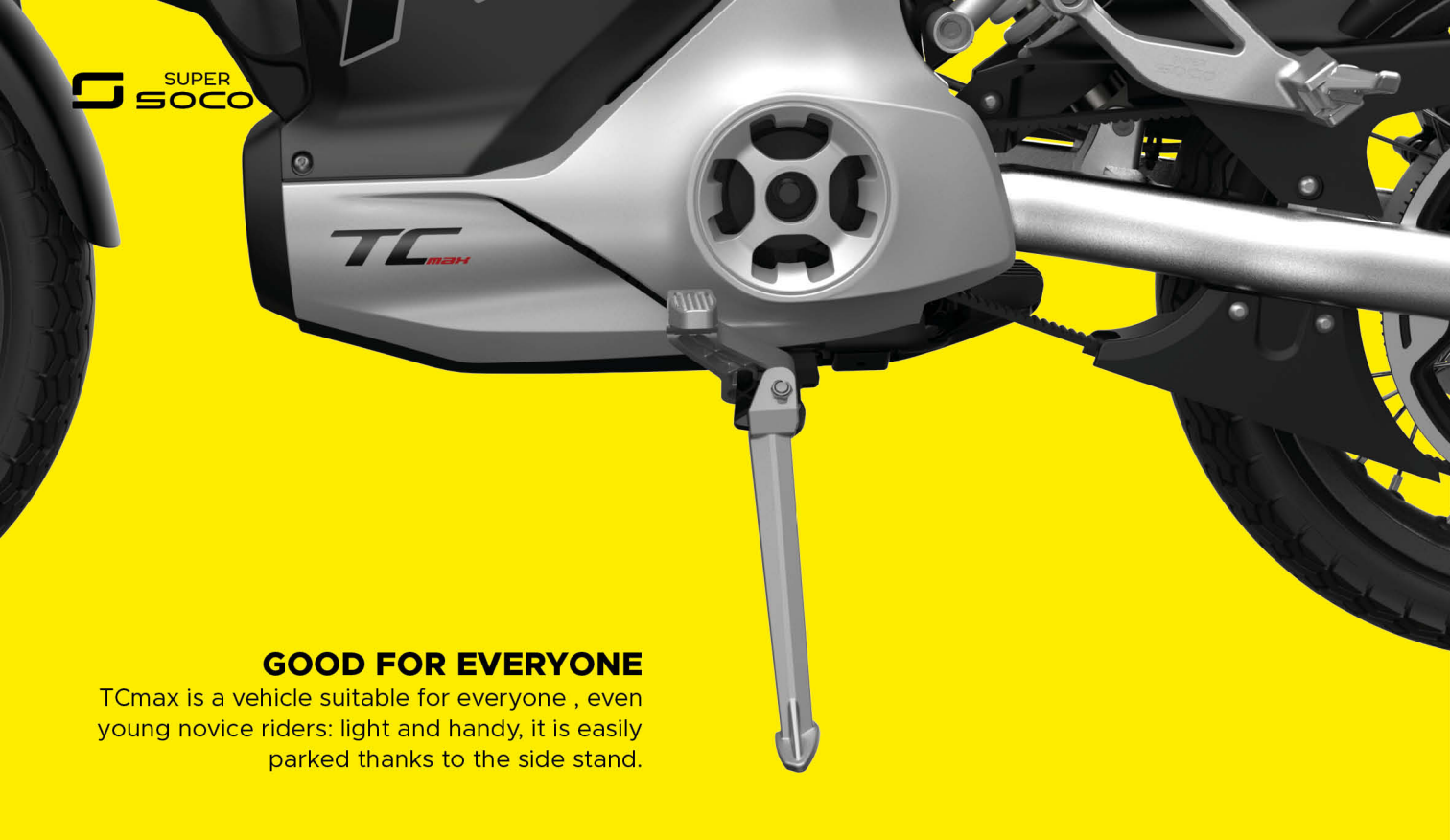


72V45Ah
Battery capacity

3years
Warranty

1200+
Cycle

4.5h
Charging time



GOOD FOR EVERYONE

TCmax is a vehicle suitable for everyone, even young novice riders: light and handy, it is easily parked thanks to the side stand.



● Orange ● Yellow ● Black/Red ● Grey

TECHNICAL INFORMATION

Homologation	L3 (comparable to a 125cc.)		
Motor	SUPER SOCO	Weight	101 kg
Rated power	3900 W	L*W*H	1982 mm*740 mm*1031 mm
Maximum power	5100 W	Wheelbase	1347 mm
Battery model	Polymer lithium battery	Ground Clearance	189 mm
Battery capacity	72V/45 Ah	Seat Height	890 mm (R Point)
Charging time	4.5 h	Rims	Fr. 2.15-17 Rr. 3.5-17
Output current	10 Ah	Tyres	Fr. 90/80-17 Rr. 120/70-17
Autonomy	92 km*	Suspension	Hydraulic damping system
Max speed	95 km/h	Brakes	CBS
Climbing angle	≤ 14°	Colors	Orange, Yellow, Black Red, Grey

*WMTC Stage 3

Tested at an average speed of 45 km/h; rider weight 75 kg.

Warning: The photos and technical information in this catalogue may refer to prototypes subject to modifications during production and are purely for illustration and reference purposes, and are therefore not binding on Vmoto International. Vmoto cannot be held responsible for any print and/or translation errors. This catalogue is transnational and therefore some products may not be available and/or their features may vary in accordance with local laws. Not all colours and versions are available in each country. Vmoto reserves the right to make changes and improvements to any product without obligation of prior notice or to make such changes to products already sold. Further characteristics of the products are contained in the pertinent owner's manuals. The products represented are not definitive versions and are therefore subject to significant changes at Vmoto's discretion without prior notice. The photographs published in this catalogue show only professional riders under controlled street conditions. Do not attempt to imitate such riding behaviour as it could be dangerous for you or other people on the road. This catalogue, including but not limited to the trademarks, logos, texts, images, graphics and table of contents herein, constitute Vmoto intellectual property, or in any event Vmoto has the right to reproduce it; any reproduction, modification or other whole or partial use of the catalogue or its contents, including publication on the Internet without the prior written consent of Vmoto, is prohibited. Actual battery consumption may vary based on many factors, including but not limited to riding style, maintenance performed, weather conditions, surface characteristics, tyre pressure, load, weight of the rider and the passenger, accessories. The weights in running order are considered with all operating fluids, standard equipment and battery. For more information visit www.Vmotosoco.com.

April 2023



FAST, STEADY AND RESPONSIVE

Precise control and linear output of power with FOC3.0 controller.



EASY START MODES

Switch on your ride with the switch housed right in front of you.

 SUPER
SOCO


WANDERER





WANDERER

New horizons, no boundaries

Leave the known road behind and venture into the wild with this spectacular two-wheeler. A true scrambler, 100% electric, that accompanies you on your wildest journeys.




75 Km/h
L3 max speed


2.5 kW
Rated power


110 Km
Autonomy
2 batteries



Snappy start

Snappy start and linear torque throughout the entire output range:
FOC 3.0 ECU gives 16%+ power input.



HIGH POWER ENGINE

The high-performance 2500 W engine provides an impressive 180 Nm of torque and allows TC Wanderer to reach easily and quickly reach the maximum speed of 75 km/h.

170Nm
L3 peak torque

14°
Climbing angle

3500W
Power peak

PROTECTED HEART

Optional double battery, removable, transportable, convenient to charge wherever you want. All sensitive components are protected by a highly durable and waterproof aluminum cover: TC Wanderer is not afraid of mud and water.



60V32Ah
Battery capacity

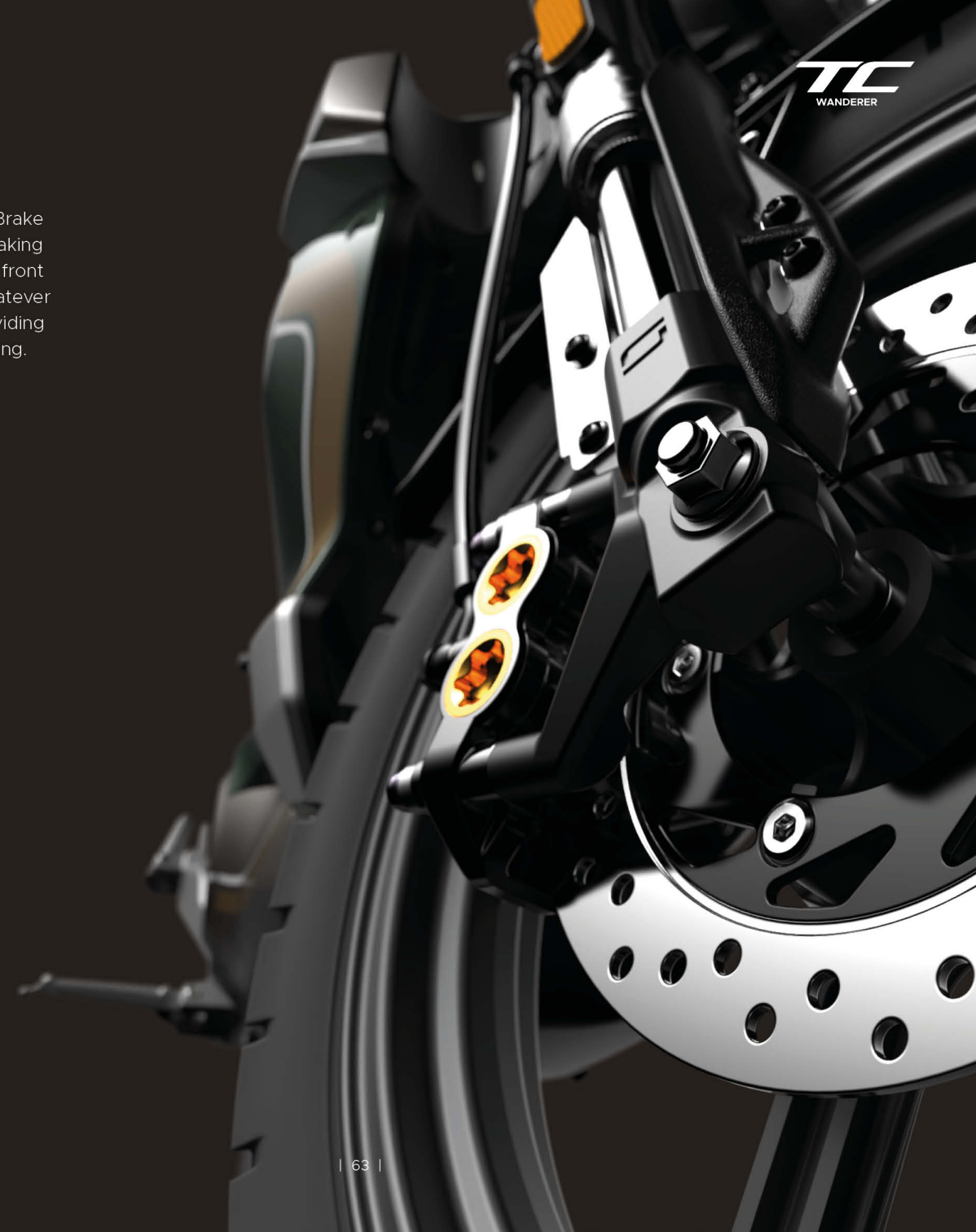
3 years
Warranty

1500+
Cycle

3.5h
Charging time
single battery

A SECURITY COMPANION

The CBS - Combined Brake System, modulates braking simultaneously on the front disc and rear disc, whatever lever is operated, providing safe and smooth braking.



PRETTY EVEN TOGETHER

The comfortable seat and extra pedals provide comfort for the passenger as well.



TOP SETUP

Adjustable rear suspension ensures maximum rideability and performance.

MINDLESS OFF-ROADING

Wide, knobby tires housed in 17-inch rims give excellent smoothness and allow to be ridden easily on and off-road. The fender is attached to the swingarm and covers the rear of the tire to prevent mud and dirt splashes from reaching the rider.



Front wheel 100/80-17 | Rear wheel 120/80-17

CLASSIC ROUND HEADLIGHT

Adapts to all road conditions, day and night. Provides high illumination, wide angle and maximum safety.

26000_{Cd}
High beam brightness

5000_{Cd}
Low beam brightness



- Ceramic Blue
- Vintage Green
- Khaki Yellow
- Stormy Grey

TECHNICAL INFORMATION

Homologation	L1, L3 (comparable to a 50cc, 125cc.)		
Motor	SUPER SOCO	Weight	103 kg
Rated power	2500 W	L*W*H	1984 mm*788 mm*1097 mm
Maximum power	3500 W	Wheelbase	1322 mm
Battery model	Polymer lithium battery	Ground Clearance	173 mm
Battery capacity	60 V/32 Ah (Optional with 2 batteries)	Seat Height	927 mm (R Point)
Charging time	3.5 h (single battery)	Rims	Fr. 2.5-17 / Rr. 3.5-17
Output current	10 Ah	Tyres	Fr. 100/80-17 Rr. 120/80-17
Autonomy	110 km* (double batteries)	Suspension	Hydraulic damping system
Max speed	L1 45 km/h L3 75 km/h	Brakes	CBS
Climbing angle	≤ 14°	Colors	Vintage Green, Khaki Yellow, Stormy Grey, Ceramic Blue

*WMTC Stage 3

Tested at an average speed of 45 km/h; rider weight 75 kg.

Warning: The photos and technical information in this catalogue may refer to prototypes subject to modifications during production and are purely for illustration and reference purposes, and are therefore not binding on Vmoto International. Vmoto cannot be held responsible for any print and/or translation errors. This catalogue is transitional and therefore some products may not be available and/or their features may vary in accordance with local laws. Not all colours and versions are available in each country. Vmoto reserves the right to make changes and improvements to any product without obligation of prior notice or to make such changes to products already sold. Further characteristics of the products are contained in the pertinent owner's manuals. The products represented are not definitive versions and are therefore subject to significant changes at Vmoto's discretion without prior notice. The photographs published in this catalogue show only professional riders under controlled street conditions. Do not attempt to imitate such riding behaviour as it could be dangerous for you or other people on the road. This catalogue, including but not limited to the trademarks, logos, texts, images, graphics and table of contents herein, constitute Vmoto intellectual property, or in any event Vmoto has the right to reproduce it; any reproduction, modification or other whole or partial use of the catalogue or its contents, including publication on the Internet without the prior written consent of Vmoto, is prohibited. Actual battery consumption may vary based on many factors, including but not limited to riding style, maintenance performed, weather conditions, surface characteristics, tyre pressure, load, weight of the rider and the passenger, accessories. The weights in running order are considered with all operating fluids, standard equipment and battery. For more information visit www.vmotosoco.com.

April 2023

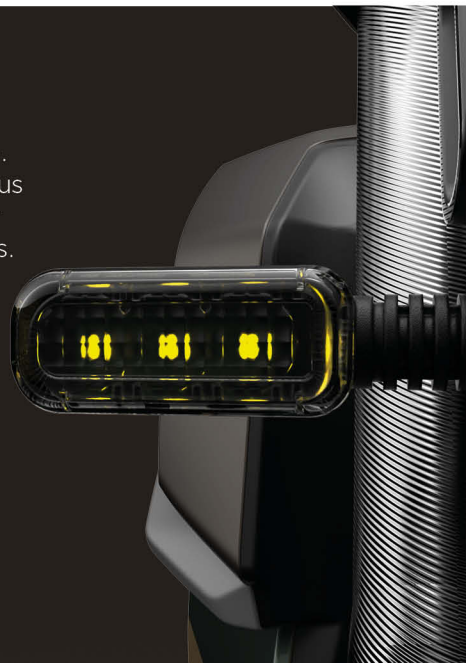
LED tail light

Classic design also for the rear light compartment, full LED high visibility.



LED direction indicators

Circular cigar shape. Ultrasonic continuous welding technology meets EU standards. Waterproof and moisture-proof, ensures high light penetration.



S SUPER
SOCO

TS
STREET HUNTER

TS

STREET HUNTER



discover its superpower

superpowers



The sporty lines of this gritty two-wheeler reveal its nature as a sports motorbike inspired by the naked and street fighter world. A motorbike with personality, perfect to accompany you on your work or school days, but also the star of your coolest nights.



day

night

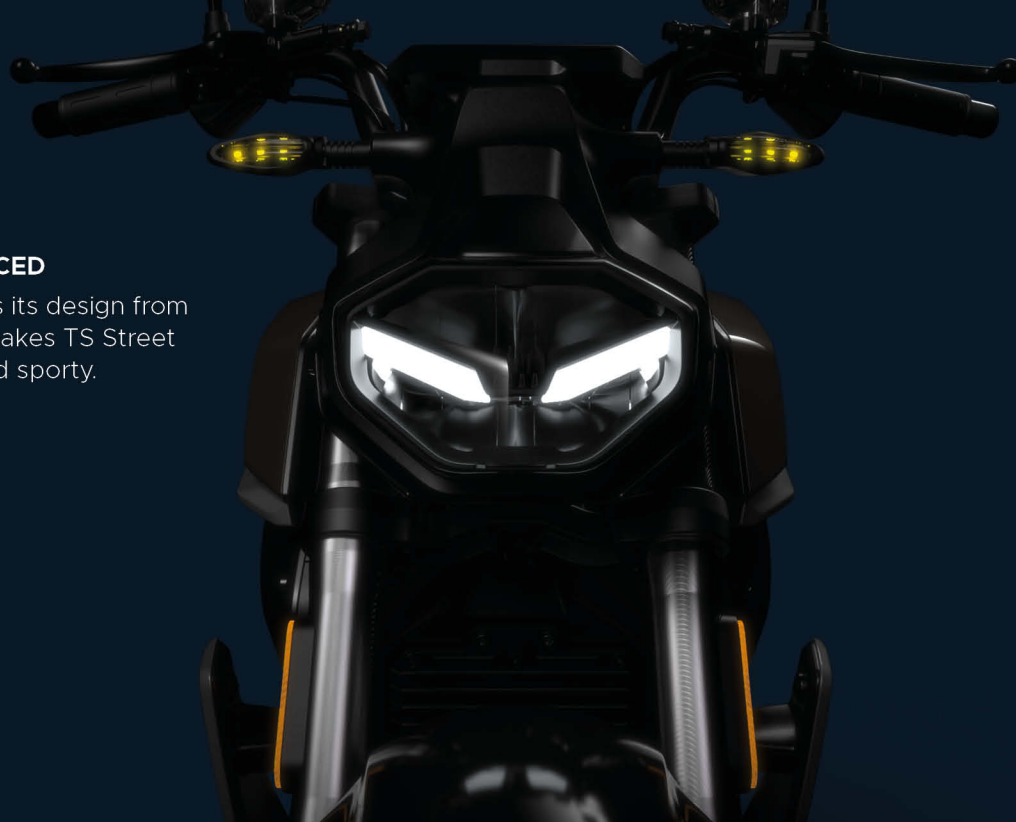
Enjoy your ride

Ride to your workplace with pleasure and safety thanks to the lowered vehicle's center of gravity.

Have lot of fun

The racing-derived aerodynamic elements give the vehicle an even more aggressive look and make it more stable while riding.





IMPOSSIBLE TO GO UNNOTICED

The full LED front light inspires its design from the fangs of a predator and makes TS Street Hunter even more modern and sporty.

26000_{Cd}
High beam brightness

5000_{Cd}
Low beam brightness

FULL LED

Iconic design for the rear light compartment, which, with its vertical elements, is scratchy and bold.



THE MAGIC OF SUPER SOCO AT ITS HIGHEST LEVEL

The two ATL high capacity pouch cell 60V 32AH batteries (the second optional) enable TS Street Hunter to travel up to 200 km at a speed of 25 km/h. Rapid charging time is only 3 hours and 30 minutes per single battery.



60V 32Ah
Battery capacity

3 years
Warranty

1200+
Cycle

3.5h
Charging time
single battery

HIGH POWER ENGINE

The high-performance motor, located in the wheel hub, provides as much as 180 Nm of torque and an incredible boost that only electric motors can give: performance excellence is in its DNA!



75 Km/h
L3 max speed

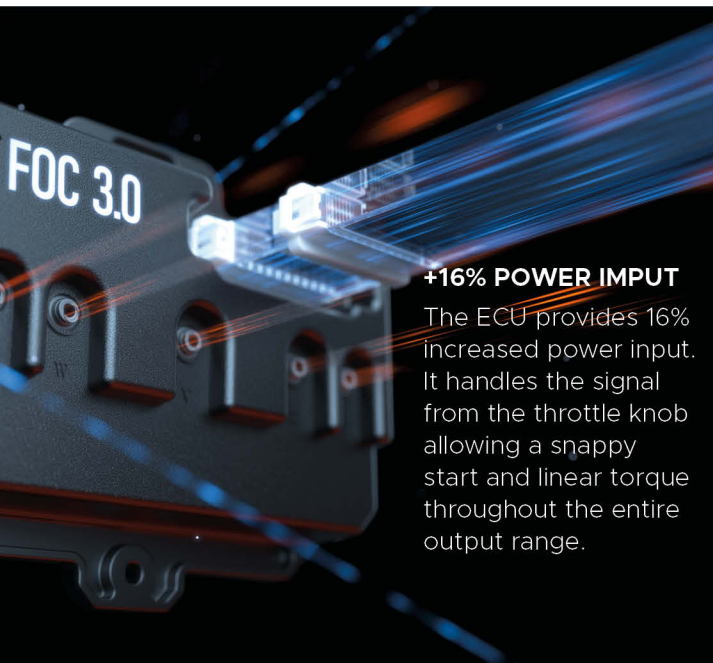
2.5 kW
Rated power

114 Km
Autonomy
2 batteries



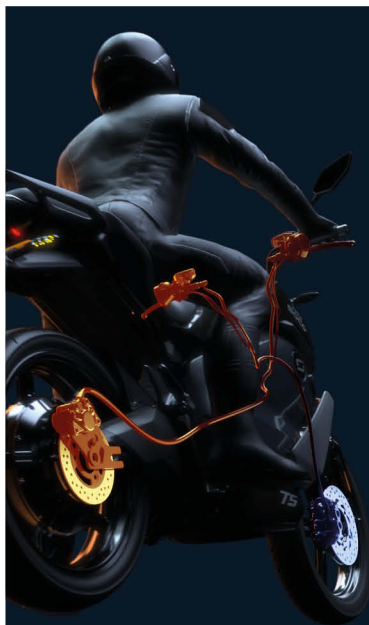
Jump on!

True sporty design without sacrificing comfort, thanks to the highly padded contoured seat.



+16% POWER INPUT

The ECU provides 16% increased power input. It handles the signal from the throttle knob allowing a snappy start and linear torque throughout the entire output range.



AN ALLY TO YOUR SECURITY

The CBS - Combined Brake System, modulates braking simultaneously on the front disc and rear disc, whatever lever is operated, providing safe and smooth braking.

PLENTY OF SPACE FOR YOUR NEEDS

Take everything you need with you: the compartment in the main body is perfect for protecting your items during any journey.



pure driving
pleasure

Racing-derived aerodynamic appendages give the bike an even more aggressive look and make it more stable while riding.



Front wheel 100/80-17 | Rear wheel 120/70-17



- Black
- Storm Grey
- Platinum White
- Charcoal Blue

TECHNICAL INFORMATION

Homologation	L1, L3 (comparable to a 50cc, 125cc.)		
Motor	SUPER SOCO	Weight	103 kg
Rated power	2500 W	L*W*H	2038 mm*780 mm*1085 mm
Maximum power	3500W	Wheelbase	1322 mm
Battery model	Polymer lithium battery	Ground Clearance	173 mm
Battery capacity	60V/32 Ah (optional two batteries)	Seat Height	927 mm (R Point)
Charging time	3.5 h	Rims	Fr. 2.15-17 Rr. 3.5-17
Output current	10 Ah	Tyres	Fr. 100/80-17 Rr. 120/70-17
Autonomy	114 km* (double batteries)	Suspension	Hydraulic damping system
Max speed	45 km/h L1 75 km/h L3	Brakes	CBS
Climbing angle	≤ 14°	Colors	Black, Storm Grey, Platinum White, Charcoal Blue

*WMTC Stage 3
Tested at an average speed of 45 km/h; rider weight 75 kg.

Warning: The photos and technical information in this catalogue may refer to prototypes subject to modifications during production and are purely for illustration and reference purposes, and are therefore not binding on Vmoto International. Vmoto cannot be held responsible for any print and/or translation errors. This catalogue is transitional and therefore some products may not be available and/or their features may vary in accordance with local laws. Not all colours and versions are available in each country. Vmoto reserves the right to make changes and improvements to any product without obligation of prior notice or to make such changes to products already sold. Further characteristics of the products are contained in the pertinent owner's manuals. The products represented are not definitive versions and are therefore subject to significant changes at Vmoto's discretion without prior notice. The photographs published in this catalogue show only professional riders under controlled street conditions. Do not attempt to imitate such riding behaviour as it could be dangerous for you or other people on the road. This catalogue, including but not limited to the trademarks, logos, texts, images, graphics and table of contents herein, constitute Vmoto intellectual property, or in any event Vmoto has the right to reproduce it; any reproduction, modification or other whole or partial use of the catalogue or its contents, including publication on the Internet without the prior written consent of Vmoto, is prohibited. Actual battery consumption may vary based on many factors, including but not limited to riding style, maintenance performed, weather conditions, surface characteristics, tyre pressure, load, weight of the rider and the passenger, accessories. The weights in running order are considered with all operating fluids, standard equipment and battery. For more information visit www.vmosoco.com.

April 2023

SUPER
SOCO

TSR

TSR



TRENDY
& ICONIC



essential,
yet bold



TSx: a must-have in the Super Soco range.
An elegant as well as classically sporty two-wheeler.



An eye-catching motorbike, distinguished by an aggressive line thrown forward and a short rear end in which it houses the upward projecting seat: even in the absence of movement, TSx maintains a wild-looking attitude.

 **45** Km/h
Max speed
  **1.9** kW
Rated power
  **50** Km
Autonomy

UN38.8 CERTIFICATE

With high-capacity cells: 75 km range with single battery.



60V20 Ah
Battery capacity
 2 years+
Battery life
 800+
Cycle
 6-7 h
Charging time



DYNAMIC LED HEADLIGHT

Adapts to all road conditions, day and night. Provides high illumination, wide angle and maximum safety.



20000_{Cd}
High beam brightness



15_m
Radiation distance



4000_{Cd}
Low beam brightness



MAIN CHASSIS IN CARBON STEEL

Coating by electrophoresis ensures full color retention, prevents corrosion, oxidation and functions as anti-rust.

REAR FRAME ALUMINIUM

Heat treated, easily supports a load of up to 150 kg.

SWING ARM

The carbon steel rear swingarm is machined by forging process. Two anchor points have been provided, so as to facilitate the modification of the setup and make it possible to add the rear fender.

**light &
strong chassis**

High-smooth upside-down fork for maximum control.



Adjustable rear mono sports-derived



● Orange

● Black

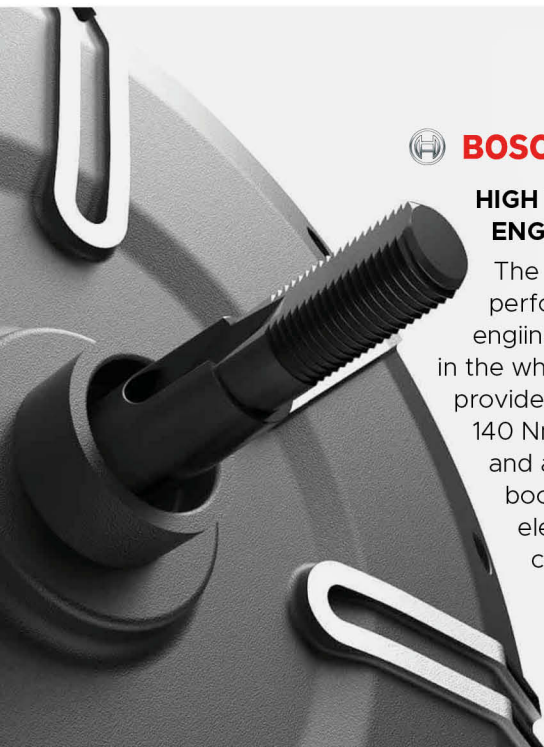
● Gray

● Red



HIGH POWER ENGINE

The high-performance engine, located in the wheel hub, provides as much as 140 Nm of torque and an incredible boost that only electric motors can give.



MORE ENERGY FOR YOUR RIDE

The precise and seamless connection between the FOC 3.0 control unit (Oriented Field Control = field-oriented control) and the high-precision Bmos V3.3 algorithm increases output power and energy conversion rate.



TECHNICAL INFORMATION

Homologation	L1 (comparable to a 50cc)			
Motor	BOSCH	Weight	83 kg	
Rated power	1900 W	L*W*H	1895 mm*703 mm*1066 mm	
Maximum power	1900 W	Wheelbase	1320 mm	
Battery model	Lithium battery (cell 18650)		Ground Clearance	200 mm
Battery capacity	60 V/30 Ah	Seat Height	870 mm (R Point)	
Charging time	3.5 h	Tires	Fr. 90/80-17 Rr. 110/70-17	
Output current	4 Ah	Suspension	Hydraulic damping system	
Autonomy	60 km*	Brakes	CBS	
Max speed	45 km/h	Colors	Black, Grey, Red, Orange	
Climbing angle	≤ 14°			

*WMTC Stage 3

Tested at an average speed of 45 km/h; rider weight 75 kg.

Warning: The photos and technical information in this catalogue may refer to prototypes subject to modifications during production and are purely for illustration and reference purposes, and are therefore not binding on Vmoto International. Vmoto cannot be held responsible for any print and/or translation errors. This catalogue is transnational and therefore some products may not be available and/or their features may vary in accordance with local laws. Not all colours and versions are available in each country. Vmoto reserves the right to make changes and improvements to any product without obligation of prior notice or to make such changes to products already sold. Further characteristics of the products are contained in the pertinent owner's manuals. The products represented are not definitive versions and are therefore subject to significant changes at Vmoto's discretion without prior notice. The photographs published in this catalogue show only professional riders under controlled street conditions. Do not attempt to imitate such riding behaviour as it could be dangerous for you or other people on the road. This catalogue, including but not limited to the trademarks, logos, texts, images, graphics and table of contents herein, constitute Vmoto intellectual property, or in any event Vmoto has the right to reproduce it; any reproduction, modification or other whole or partial use of the catalogue or its contents, including publication on the Internet without the prior written consent of Vmoto, is prohibited. Actual battery consumption may vary based on many factors, including but not limited to riding style, maintenance performed, weather conditions, surface characteristics, tyre pressure, load, weight of the rider and the passenger, accessories. The weights in running order are considered with all operating fluids, standard equipment and battery. For more information visit www.vmototosoco.com.

April 2023

Cafè TC

The legacy of typical classic Cafè Racer elements is mixed with the technology of a completely green future: discover TC.



Retro-style instrumentation, classically styled raised handlebars, coffee-colored comfort seat, classic front headlight, curvy line: **the unique classic elements of café racer style.**


45 Km/h
L1 max speed


60 Km/h
L3 max speed


1.9 kW
Engine power


60 Km
Autonomy



LED FRONT HEADLIGHT

Classic conformation using Matrix LED technology. Power consumption is effectively reduced.



BETTER VISION

Rear position light and stop light with Matrix LED technology. Field of vision over 270 degrees, which makes night driving safer.

between technology

Seamless integration of the Café Racer's classic mechanical odometer with electronic LED technology for a clear view of the display.

and retro style



STYLISH DETAILS

The tobacco-colored saddle with clear stitching looks like it came straight from 1950s London. The padding and ergonomics ensure great comfort on your every ride. The perfectly matched handlebar grips complete the 100% café racer style look.



retro, from head to tires



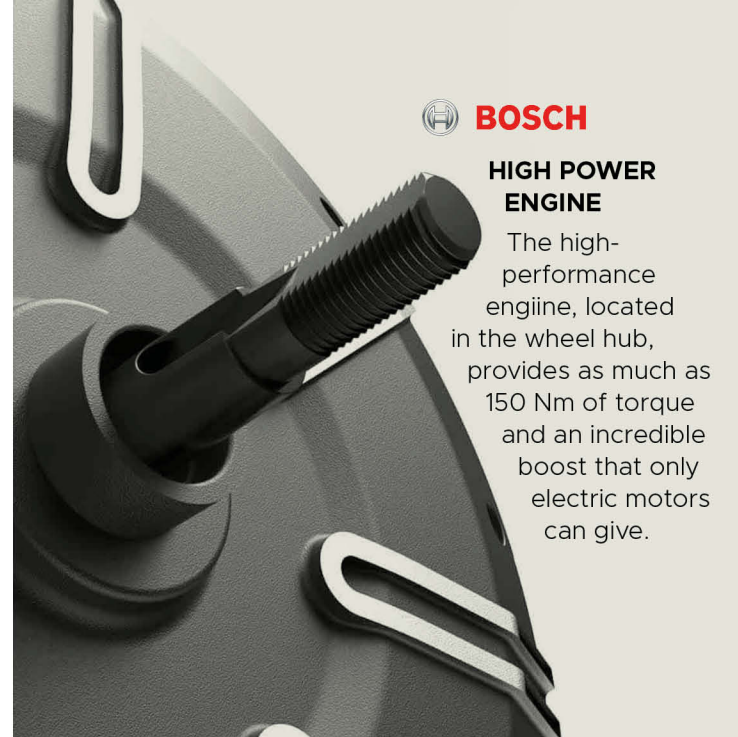
The tires have high-density weave, which provides strong ground grip and high safety.

Front wheel 90/80-17
Rear wheel 110/70-17

BOSCH

HIGH POWER ENGINE

The high-performance engine, located in the wheel hub, provides as much as 150 Nm of torque and an incredible boost that only electric motors can give.



MORE ENERGY FOR YOUR RIDE

The precise and seamless connection between the FOC 3.0 control unit (Oriented Field Control = field-oriented control) and the high-precision Bmos V3.3 algorithm increases output power and energy conversion rate.



UN38.8 CERTIFICATE

With high-capacity cells: 75 km range with single battery.

60V30Ah
Battery capacity

2 years+
Battery life

800+
Cycle

3.5h
Charging time





PLENTY OF SPACE FOR YOUR NEEDS

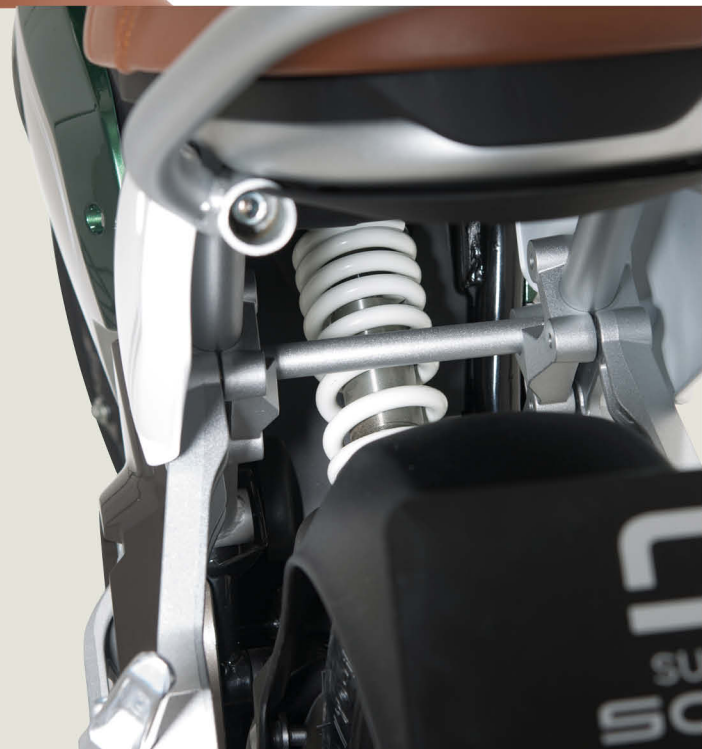
Take everything you need with you: the compartment in the main body is perfect for protecting your items during any journey.



- Diamond black
- Vintage green
- Dark sea blue
- Khaki yellow

TOP SETUP

Adjustable rear suspension ensures maximum rideability and performance.



TECHNICAL INFORMATION

Homologation	L1, L3 (comparable to a 50cc, 125cc.)		
Motor	BOSCH	Weight	83 kg
Rated power	1900 W	L*W*H	1926 mm*710 mm*1100 mm
Maximum power	2100 W	Wheelbase	1320 mm
Battery model	18650 lithium battery	Ground Clearance	200 mm
Battery capacity	60 V/30 Ah	Seat Height	890 mm (R Point)
Charging time	3.5 h	Rims	-
Output current	4 Ah	Tyres	Fr. 90/80-17 Rr. 110/70-17
Autonomy	60 km*	Suspension	Hydraulic damping system
Max speed	L1 45 km/h L3 60 km/h	Brakes	CBS
Climbing angle	≤ 14°	Colors	Vintage green, Diamond black, Dark sea blue, Khaki yellow

*WMTC Stage 3

Tested at an average speed of 45 km/h; rider weight 75 kg.

Warning: The photos and technical information in this catalogue may refer to prototypes subject to modifications during production and are purely for illustration and reference purposes, and are therefore not binding on Vmoto International. Vmoto cannot be held responsible for any print and/or translation errors. This catalogue is transnational and therefore some products may not be available and/or their features may vary in accordance with local laws. Not all colours and versions are available in each country. Vmoto reserves the right to make changes and improvements to any product without obligation of prior notice or to make such changes to products already sold. Further characteristics of the products are contained in the pertinent owner's manuals. The products represented are not definitive versions and are therefore subject to significant changes at Vmoto's discretion without prior notice. The photographs published in this catalogue show only professional riders under controlled street conditions. Do not attempt to imitate such riding behaviour as it could be dangerous for you or other people on the road. This catalogue, including but not limited to the trademarks, logos, texts, images, graphics and table of contents herein, constitute Vmoto Intellectual property, or in any event Vmoto has the right to reproduce it; any reproduction, modification or other whole or partial use of the catalogue or its contents, including publication on the Internet without the prior written consent of Vmoto, is prohibited. Actual battery consumption may vary based on many factors, including but not limited to riding style, maintenance performed, weather conditions, surface characteristics, tyre pressure, load, weight of the rider and the passenger, accessories. The weights in running order are considered with all operating fluids, standard equipment and battery. For more information visit www.Vmotosoco.com.

April 2023



Engine	Super Soco	Super Soco	Super Soco	BOSCH	Super Soco	Super Soco	Super Soco	BOSCH	BOSCH
Power rating	4000 W	7000 W	600 W	1600 W	3900 W	2500 W	2500 W	1900 W	1900 W
Power peak	4800W	8000W	1000 W	2000 W	5100 W	3500 W	3500 W	1900 W	2100 W
Battery model	Polymer lithium battery	Polymer lithium battery	Polymer lithium battery	18650 cylindrical battery	Polymer lithium battery	Polymer lithium battery	Polymer lithium battery	Lithium battery (cell 18650)	Lithium battery (cell 18650)
Battery capacity	60 V/45 Ah opt. 2 batteries	60 V/90 Ah	48 V/20 Ah	60 V/30 Ah	72 V/45 Ah	60 V/32 Ah	60 V/32 Ah	60 V/30 Ah	60 V/30 Ah
Charging time	3.5 h single battery	7 h double battery	4.5 h	8 h	4.5 h	3.5 h (single battery)	3.5 h (single battery)	3.5 h	3.5 h
Charging power	0.9 Kw	0.9 Kw	0.24 Kw	0.24 Kw	0.75 Kw	0.6 Kw	0.6 Kw		
Max speed	90 km/h	105 km/h	42 Km/h	45 Km/h	95 km/h	75 km/h	L1 45 Km/h L3 75 km/h	45 Km/h	L1 45 Km/h L3 60 Km/h
Distance range*	137km (double battery)	100 km (double battery)	39 km	65 km	92 Km	110 Km (double battery)	L1 57 Km L3 114 Km (2 batteries)	60 Km	75 Km
Climbing corner	14°	20°	12°	14°	14°	14°	14°	14°	14°
L*W*H	2022*757*1450 mm	2022*757*1450 mm	1655*695*1083 mm	1782*727*1087mm	1982*740*1031 mm	1984*788*1097mm	2038*780*1085 mm	1895*703*1066 mm	1924*710*1098 mm
Weight	125 kg	143 kg	57 kg	74 kg	101 kg	103 kg	103 kg	83 kg	83 Kg
Wheelbase	1366 mm	1366mm	1169 mm	1217 mm	1347 mm	1322 mm	1322 mm	1320 mm	1320 mm
Ground clearance	154 mm	154 mm	135 mm	140 mm	189 mm	173 mm	173 mm	200 mm	200 mm
Seat height	925 mm (R Point)	925 mm (R Point)	878 mm (R Point)	720 mm (R Point)	890 mm (R Point)	927 mm (R Point)	927 mm (R Point)	870 mm (R Point)	890 mm (R Point)
Rims	Fr. 2.15-16 Rr. 2.5-14	Fr. 2.15-16 Rr. 2.5-14	Fr. 1.6-12 Rr. 1.6-12	Fr. 2.15-12. Rr. 2.15-12	Fr.2.15-17 Rr.3.5-17	Fr. 2.5-17 Rr. 3.5-17	Fr. 2.5-17 Rr. 3.5-17	-	-
Tires	Front 110/80-16 Rear 110/80-14	Front 110/80-16 Rear 110/80-14	Front 70/90-12 Rear 70/90-12	Front 90/90-12 Rear 90/90-12	Front 90/80-17 Rear 120/70-17	Front 100/80-17 Rear 120/80-17	Front 100/80-17 Rear 120/70-17	Front 90/80-17 Rear 110/70-17	Front 90/80-17 Rear 110/70-17
Suspension	Hydraulic damping system	Hydraulic damping system	Hydraulic damping system	Hydraulic damping system	Hydraulic damping system	Hydraulic damping system	Hydraulic damping system	Hydraulic damping system	Hydraulic damping system
Brakes	CBS	CBS	SSBS	SSBS	CBS	CBS	CBS	CBS (Fr./Rr. Disc)	CBS (Fr./Rr. Disc)
Colors	<ul style="list-style-type: none"> ○ White ● Black ● Red ● Grey ● Blue ● Green ● Silver 	<ul style="list-style-type: none"> ○ White ● Black ● Red ● Grey ● Blue ● Green ● Silver 	<ul style="list-style-type: none"> ○ White ● Orange ● Light blue 	<ul style="list-style-type: none"> ● Dark gold ● Cobalt blue ● Charcoal grey 	<ul style="list-style-type: none"> ● Orange ● Black ● Red ● Grey 	<ul style="list-style-type: none"> ● Ceramic Blue ● Vintage green ● Khaki yellow ● Stormy grey 	<ul style="list-style-type: none"> ● Black ● Charcoal blue ● Platinum white ● Stormy grey 	<ul style="list-style-type: none"> ○ White ● Grey ● Red ● Orange 	<ul style="list-style-type: none"> ● Diamond black ● Vintage green ● Dark sea blue ● Khaki yellow

*WMTC Stage 3

 SUPER
SOCO



Vmoto Limited

Level 48, 152-158 St Georges Terrace
Perth Western Australia 6000, Australia

Vmoto Soco International

15, Zhongxing East Road - Lishui Economic Development Zone
Lishui District, Nanjing 211200 - Jiangsu Province, China

vmotosoco.com

Vmoto Europe

Boekweitstraat 95-97, 2153 GK
Nieuw Vennepe, The Netherlands



Official
Electric Scooter
Supplier

Vmoto Soco Italy

Viale Fratelli Casiraghi, 427
20099 S. San Giovanni
Milan District, Italy





Happiness is a journey

